

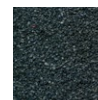
# GERARD ALPINE INSTALLATION

## TECHNICAL

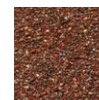
Overall Length:	1335mm
Length of Cover:	1250mm
Width of Cover:	368 mm
Roof Cover:	0.46 m <sup>2</sup>
Slates per m <sup>2</sup> :	2.18
Weight/panel:	2.9 kg
Weight/area:	6.6 kg/m <sup>2</sup>
Minimum pitch:	15° (27%)



DARK SILVER



CHARCOAL



REDWOOD

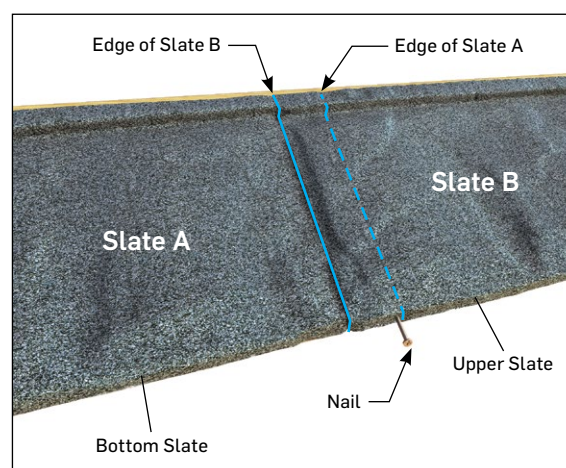
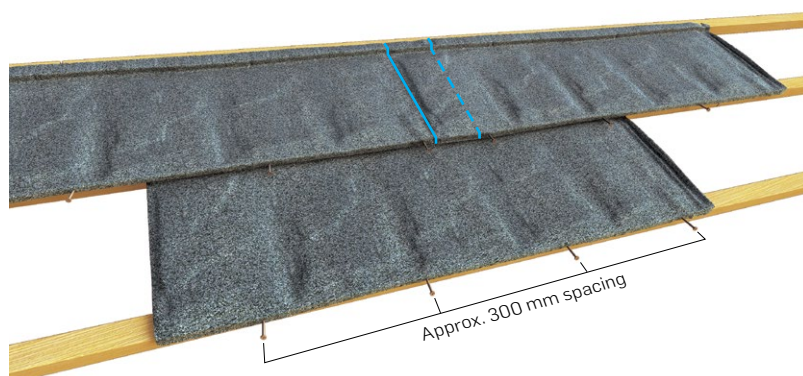
## BATTEN SPACING

Batten spacing: 368 mm



## NAILING

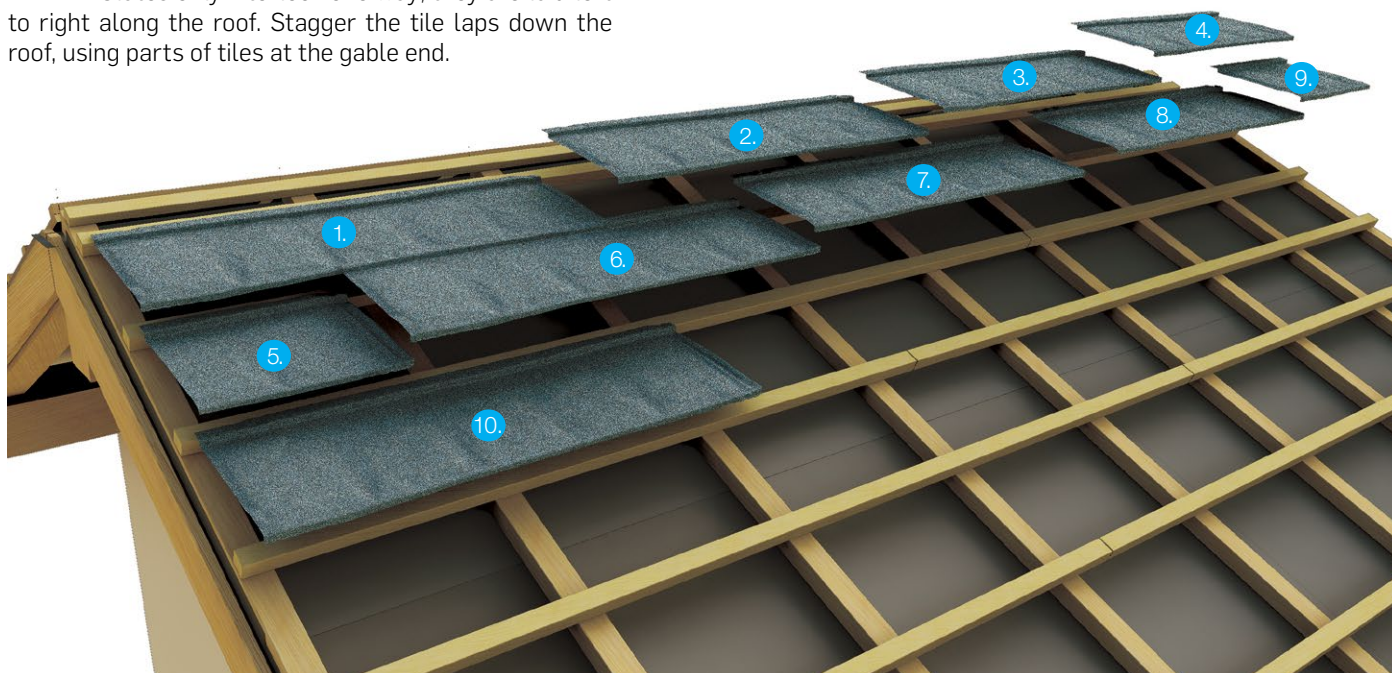
Nails should be spaced approximately 300 mm apart. Care is required at the lap of the Slate to ensure that the nail is placed outside of the hidden water channel.



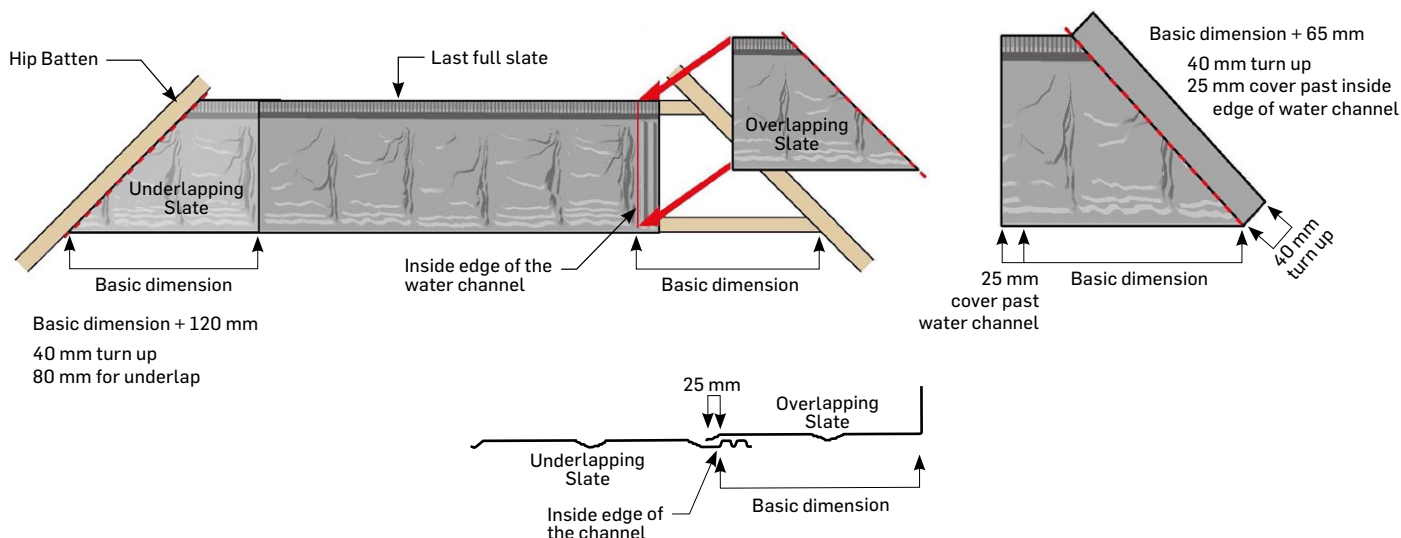
# GERARD ALPINE INSTALLATION

## TILE LAYING

ALPINE Slates only interlock one way; they are laid left to right along the roof. Stagger the tile laps down the roof, using parts of tiles at the gable end.



## HIP



GERARD standard accessories are suitable for the Alpine Slate profile.

Plastic accessories which required appropriate base plate with Alpine Slate profile (COWL VENT G2, SANITARY VENT G15-45 ISO, VENT G110 ISO, GAS FLUE OUTLET G125, ANTENNA OUTLET G16 and TUBE TILE 1-2 PIPES) are added as new products in our offer range.

This Slate Installation Guide contains only differences and specifics compared to the other Gerard profiles. All details which are not specifically defined here shall be checked in GERARD INSTALLATION MANUAL.